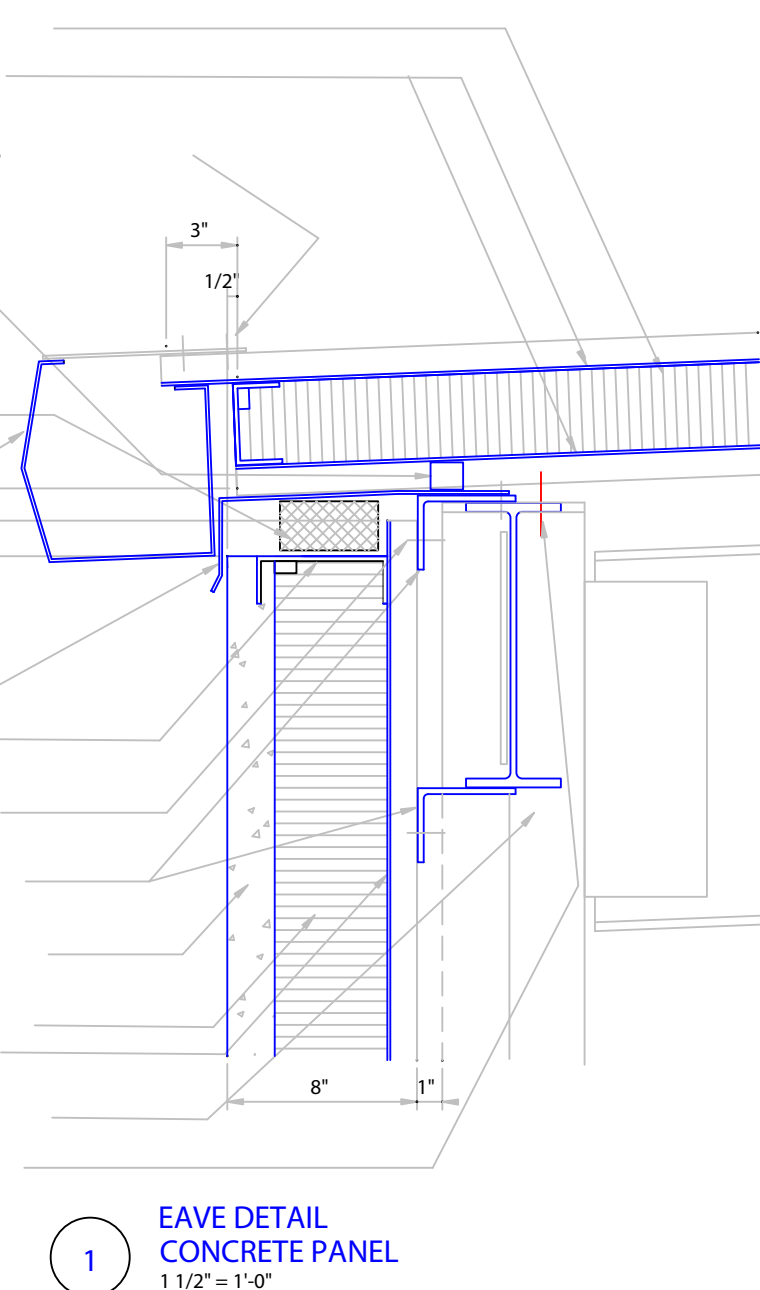
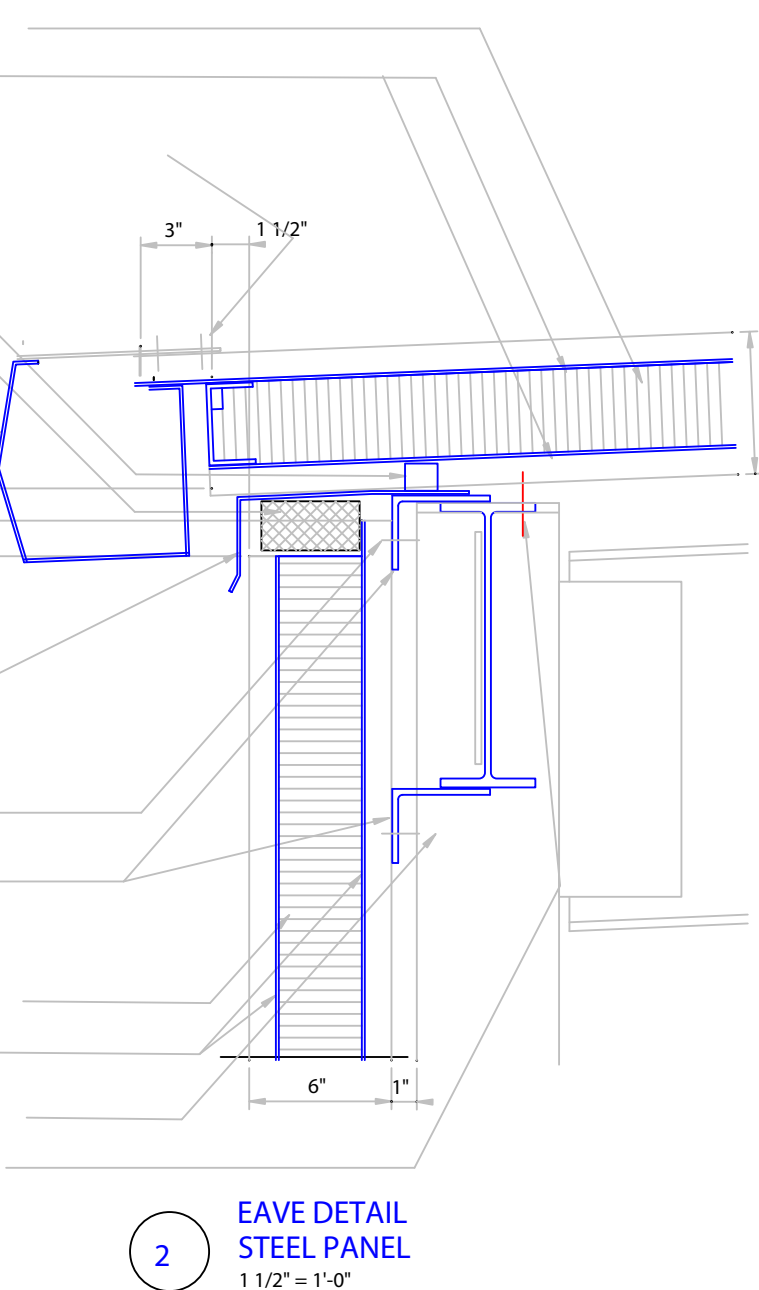


POLYURETHANE FOAM INSULATION  
26 GA FORMED SHEET STEEL PANEL FACE  
#12X3/4" HW-1/4" AF-SP STITCH SCREWS INTO GUTTER STRAP OVER RIB @ 24" OC.  
OUTSIDE CLOSURE STRIP  
CONTINUOUS RESILIENT FOAM BLOCK  
8" GUTTER  
#4 GUTTER END TRIM  
TILT-UP HANGER PLATE ANCHORED IN PANEL TOP END  
#12X24X1 1/4" STRUCTURAL SCREWS @ 12" OC EA RIB.  
2X3X3/16" ATTACHMENT ANGLE 2" STITCH WELD @ 12" OC  
FAB-LOK MOLLY @ EACH RIB  
AIR ENTRAINED TEXTURED 2" THICK LIGHT WEIGHT CONCRETE PANEL FACE W/ 6X6/10X10 WWF  
POLYURETHANE FOAM INSULATION  
26 GA FORMED SHEET STEEL PANEL FACE  
6X6X3/16" STEEL TUBE COLUMN  
FAB-LOK MOLLY @ CENTER RIB OF EACH ROOF PANEL  
2-#12X24X1 1/4" STRUCTURAL SCREWS @ JOINING RIB OF EACH ROOF PANEL



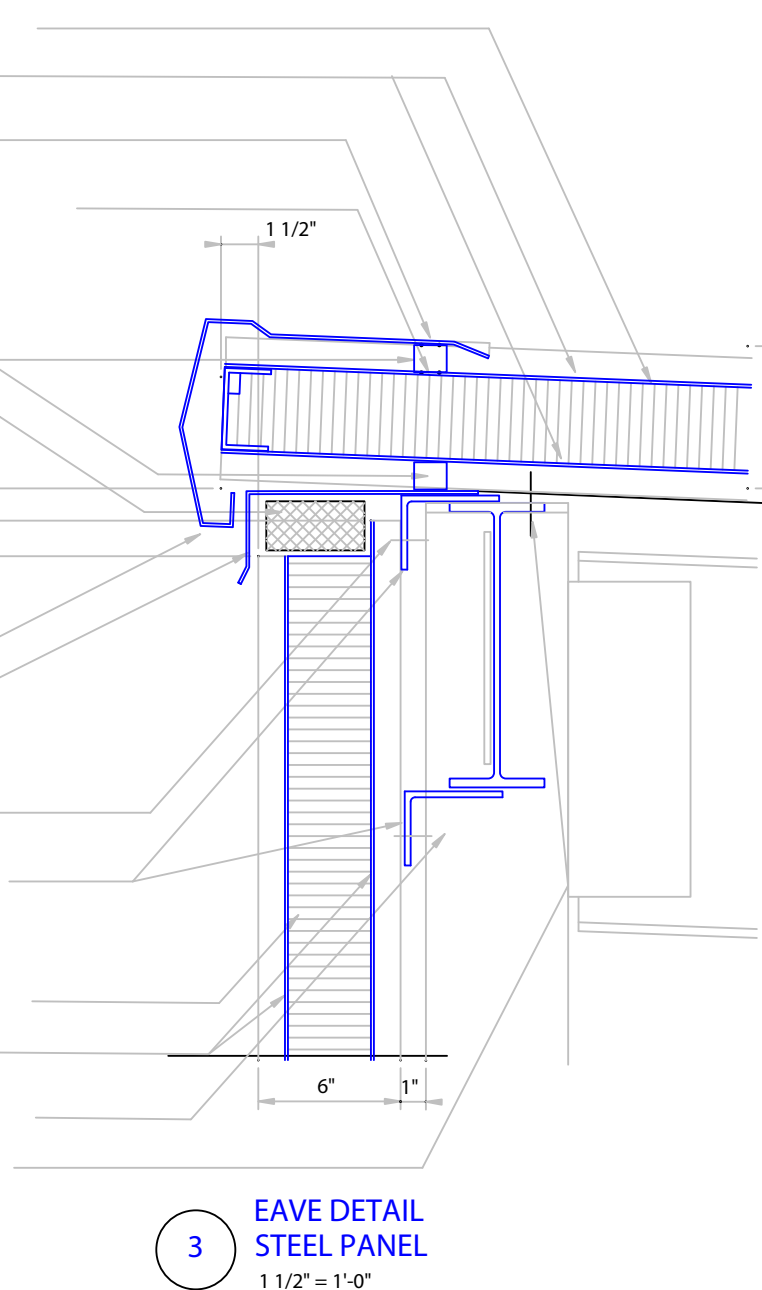
**1 EAVE DETAIL CONCRETE PANEL**  
1 1/2" = 1'-0"

POLYURETHANE FOAM INSULATION  
26 GA FORMED SHEET STEEL PANEL FACE  
#12X3/4" HW-1/4" AF-SP STITCH SCREWS INTO GUTTER STRAP OVER RIB @ 24" OC.  
OUTSIDE CLOSURE STRIP  
CONTINUOUS RESILIENT FOAM BLOCK  
8" GUTTER  
#4 GUTTER END TRIM  
#12X24X1 1/4" STRUCTURAL SCREWS @ 12" OC EA RIB.  
2X3X3/16" ATTACHMENT ANGLE 2" STITCH WELD @ 12" OC  
FAB-LOK MOLLY @ EACH RIB  
POLYURETHANE FOAM INSULATION  
26 GA FORMED SHEET STEEL PANEL FACE  
6X6X3/16" STEEL TUBE COLUMN  
FAB-LOK MOLLY @ CENTER RIB OF EACH ROOF PANEL  
2-#12X24X1 1/4" STRUCTURAL SCREWS @ JOINING RIB OF EACH ROOF PANEL



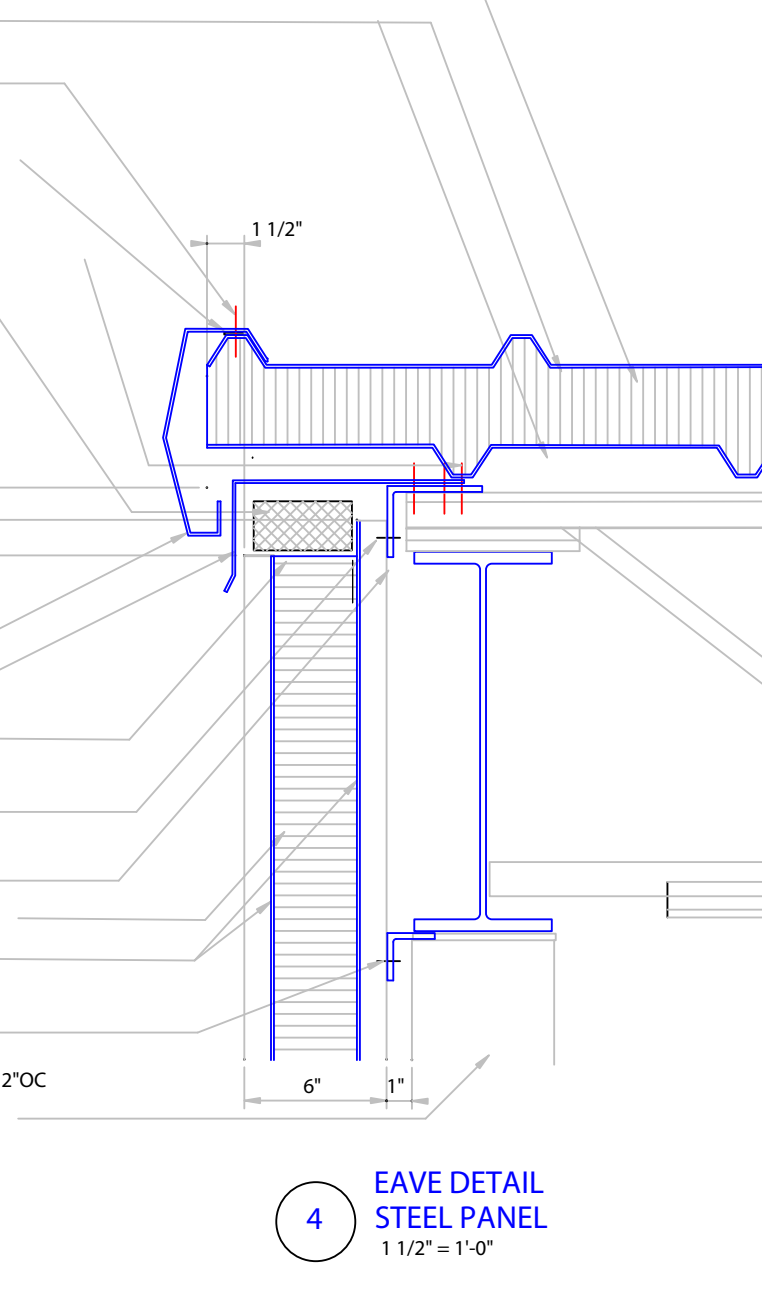
**2 EAVE DETAIL STEEL PANEL**  
1 1/2" = 1'-0"

POLYURETHANE FOAM INSULATION  
26 GA FORMED SHEET STEEL PANEL FACE  
#12X3/4" HW-1/4" STITCH WITH SEALANT BEAD COVERING HEAD  
DOUBLE BEAD NPC SOLAR SEAL 900 ELASTOMERIC SEALANT W/ CONTINUOUS SEALANT BEAD ON EXPOSED EDGE  
OUTSIDE CLOSURE STRIP  
CONTINUOUS RESILIENT FOAM BLOCK  
PREFORMED METAL FASCIA  
#4 GUTTER END TRIM  
#12X24X1 1/4" STRUCTURAL SCREWS @ 12" OC EA RIB.  
3X4X3/16" ATTACHMENT ANGLE 2" STITCH WELD @ 12" OC  
FAB-LOK MOLLY @ EACH RIB  
POLYURETHANE FOAM INSULATION  
26 GA FORMED SHEET STEEL PANEL FACE  
6X6X3/16" STEEL TUBE COLUMN  
FAB-LOK MOLLY @ CENTER RIB OF EACH ROOF PANEL  
2-#12X24X1 1/4" STRUCTURAL SCREWS @ JOINING RIB OF EACH ROOF PANEL



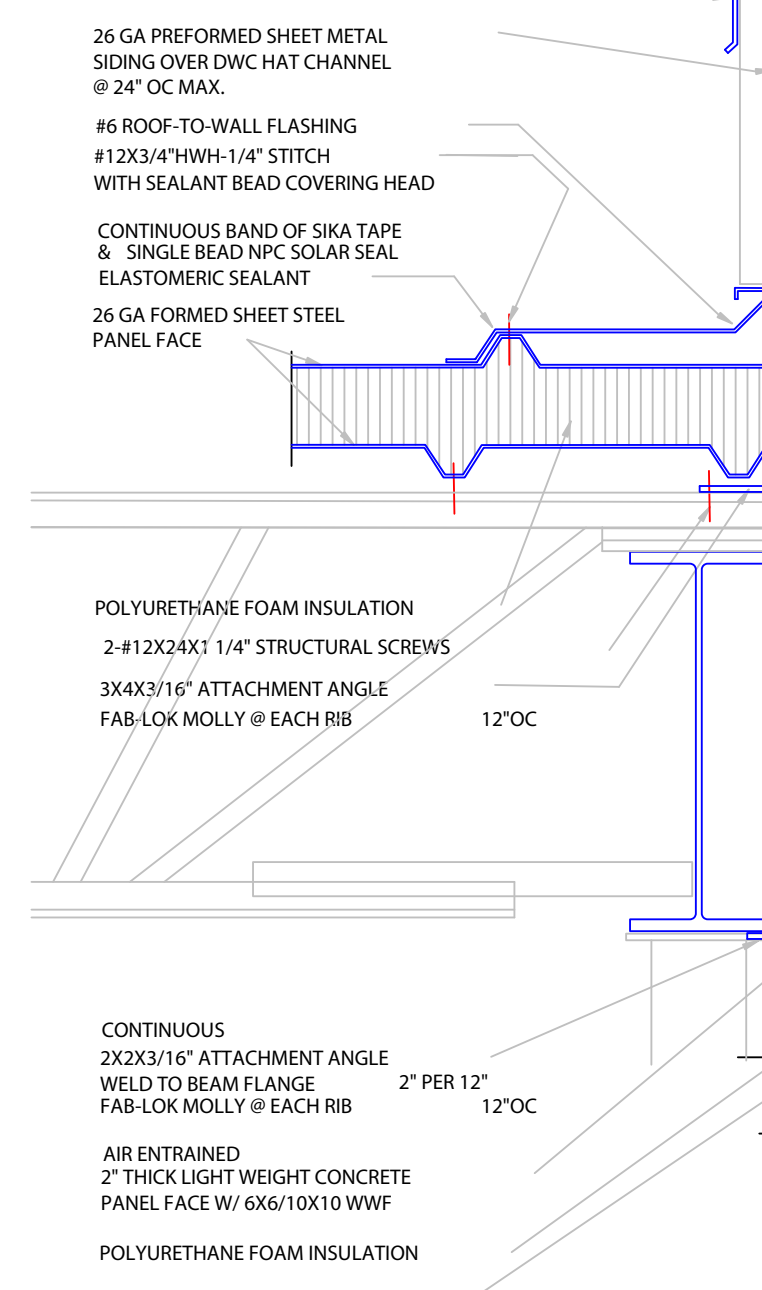
**3 EAVE DETAIL STEEL PANEL**  
1 1/2" = 1'-0"

POLYURETHANE FOAM INSULATION  
26 GA FORMED SHEET STEEL PANEL FACE  
#12X3/4" HW-1/4" STITCH WITH SEALANT BEAD COVERING HEAD  
CONTINUOUS BAND OF SIKA TAPE & SINGLE BEAD NPC SOLAR SEAL ELASTOMERIC SEALANT  
FAB-LOK MOLLY  
CONTINUOUS RESILIENT FOAM BLOCK  
PREFORMED METAL FASCIA  
#4 GUTTER END TRIM  
TILT-UP HANGER PLATE ANCHORED IN PANEL TOP END  
#12X24X1 1/4" STRUCTURAL SCREWS @ 12" OC EA RIB.  
3X4X3/16" ATTACHMENT ANGLE  
POLYURETHANE FOAM INSULATION  
26 GA FORMED SHEET STEEL PANEL FACE  
2X2X3/16" ATTACHMENT ANGLE WELD TO BEAM FLANGE  
FAB-LOK MOLLY @ EACH RIB  
6X6X3/16" STEEL TUBE COLUMN



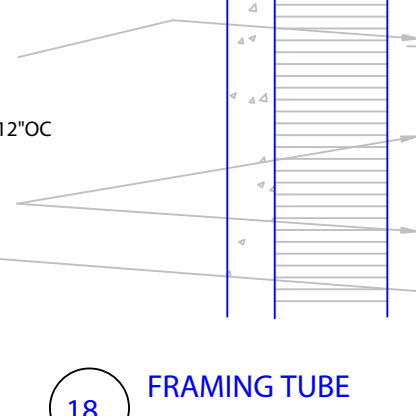
**4 EAVE DETAIL STEEL PANEL**  
1 1/2" = 1'-0"

TILT-UP HANGER PLATE ANCHORED IN PANEL TOP END  
#5 PARAPET WALL CAP  
26 GA PERFORMED SHEET METAL SIDING OVER DWG HAT CHANNEL @ 24" OC MAX.  
#6 ROOF-TO-WALL FLASHING  
#12X3/4" HW-1/4" STITCH WITH SEALANT BEAD COVERING HEAD  
CONTINUOUS BAND OF SIKA TAPE & SINGLE BEAD NPC SOLAR SEAL ELASTOMERIC SEALANT  
26 GA FORMED SHEET STEEL PANEL FACE  
POLYURETHANE FOAM INSULATION  
2-#12X24X1 1/4" STRUCTURAL SCREWS  
3X4X3/16" ATTACHMENT ANGLE  
FAB-LOK MOLLY @ EACH RIB  
CONTINUOUS 2X2X3/16" ATTACHMENT ANGLE WELD TO BEAM FLANGE  
2" PER 12"  
12" OC  
AIR ENTRAINED 2" THICK LIGHT WEIGHT CONCRETE PANEL FACE W/ 6X6/10X10 WWF  
POLYURETHANE FOAM INSULATION  
26 GA FORMED SHEET STEEL PANEL FACE  
6X6X3/16" STEEL TUBE COLUMN  
#12X24X1 1/4" STRUCTURAL SCREWS @ 12" OC EA RIB.  
2-#12X24X1 1/4" STRUCTURAL SCREWS @ JOINING RIB OF EACH ROOF PANEL



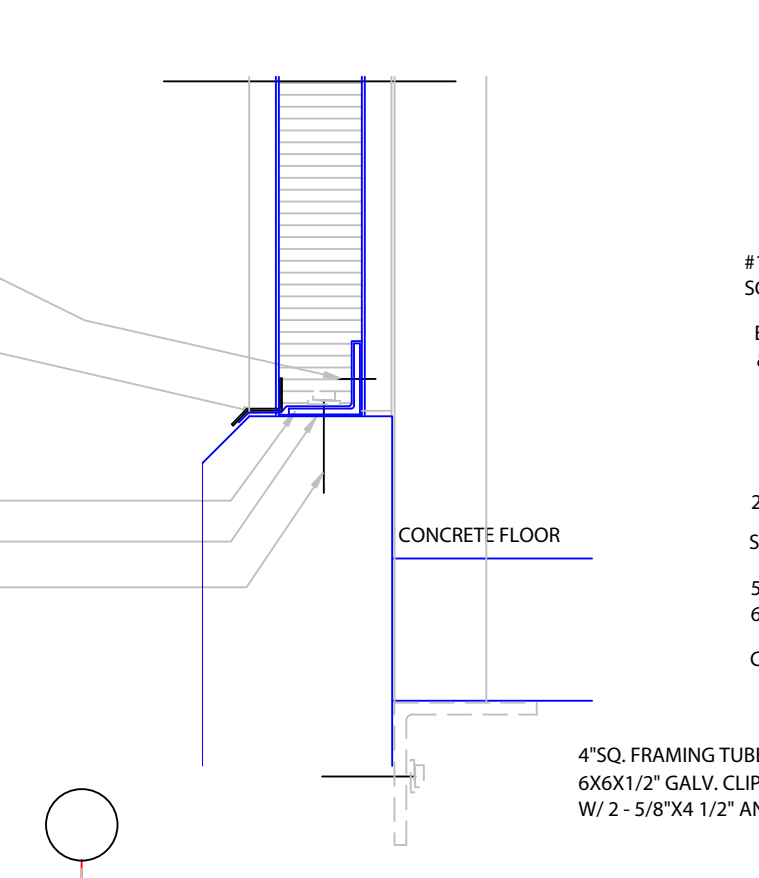
**5 PARAPET DETAIL CONCRETE PANEL**  
1 1/2" = 1'-0"

2X2X3/16" ATTACHMENT ANGLE WELD TO BEAM FLANGE  
2" STITCH WELD @ 12" OC  
FAB-LOK MOLLY @ EACH RIB  
4X4X3/16" STEEL TUB FRAME  
2X2X3/16" CLIP ANGLES



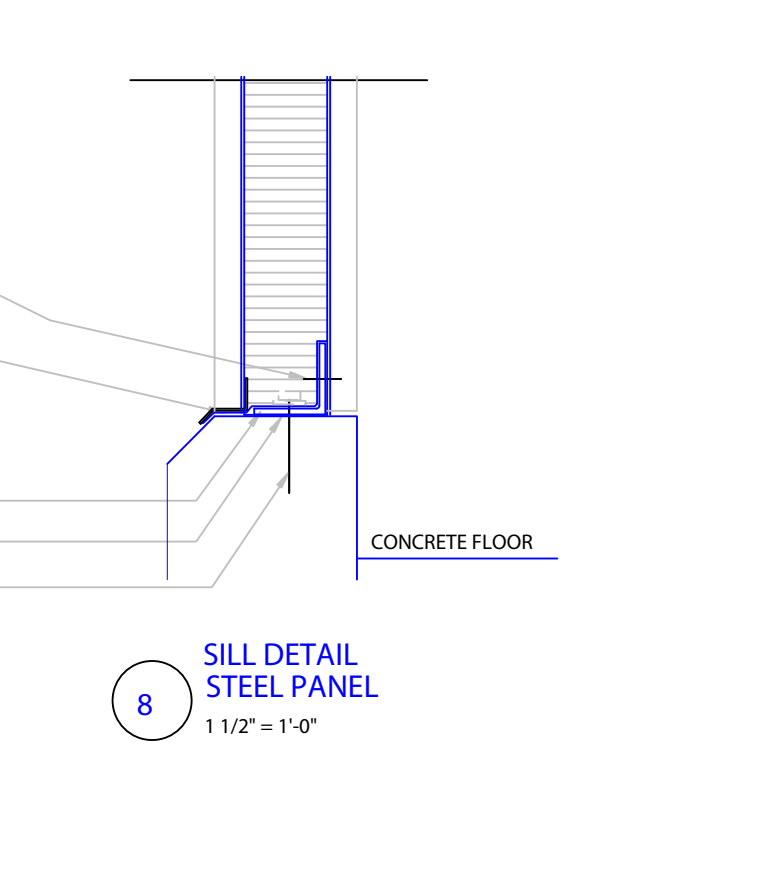
**18 FRAMING TUBE**  
1 1/2" = 1'-0"

#12X24X1 1/4" STRUCTURAL SCREWS @ 12" OC EA RIB.  
ELASTOMERIC FLASHING  
8 26 GA SILL CAP FLASHING  
2X3X3/16" GALV SILL ANGLE  
SILL SEALER PAD  
5/8" DIA ANKR-TITE BOLTS 6" EMBEDMENT  
CONCRETE FOUNDATION WALL



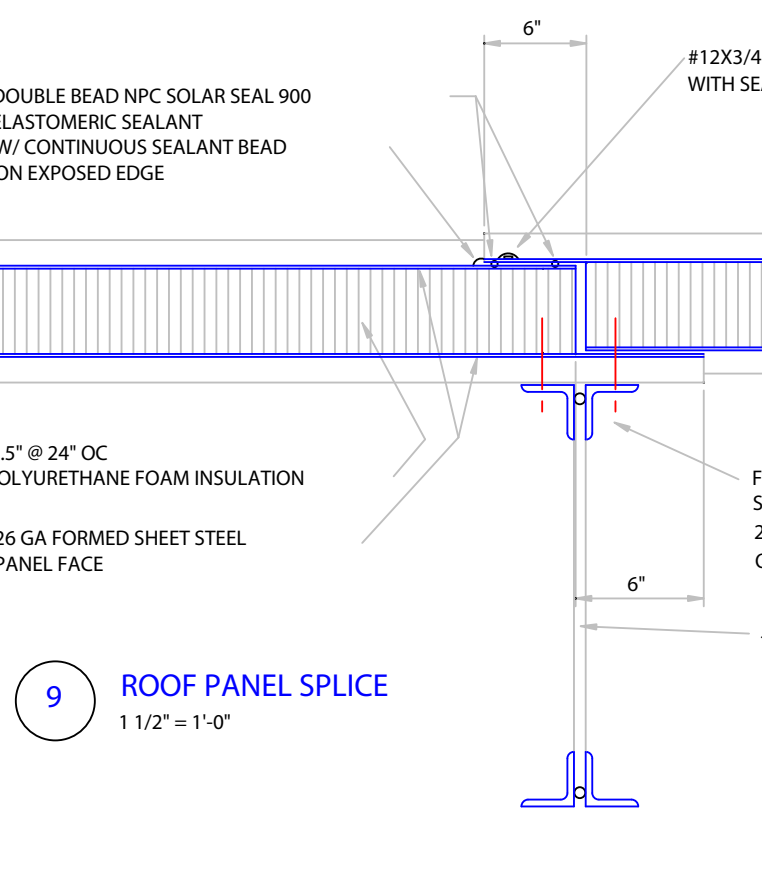
**8 SILL DETAIL STEEL PANEL**  
1 1/2" = 1'-0"

#12X24X1 1/4" STRUCTURAL SCREWS @ 12" OC EA RIB.  
ELASTOMERIC FLASHING  
8 26 GA SILL CAP FLASHING  
2X3X3/16" GALV SILL ANGLE  
SILL SEALER PAD  
5/8" DIA ANKR-TITE BOLTS 6" EMBEDMENT  
CONCRETE FOUNDATION WALL



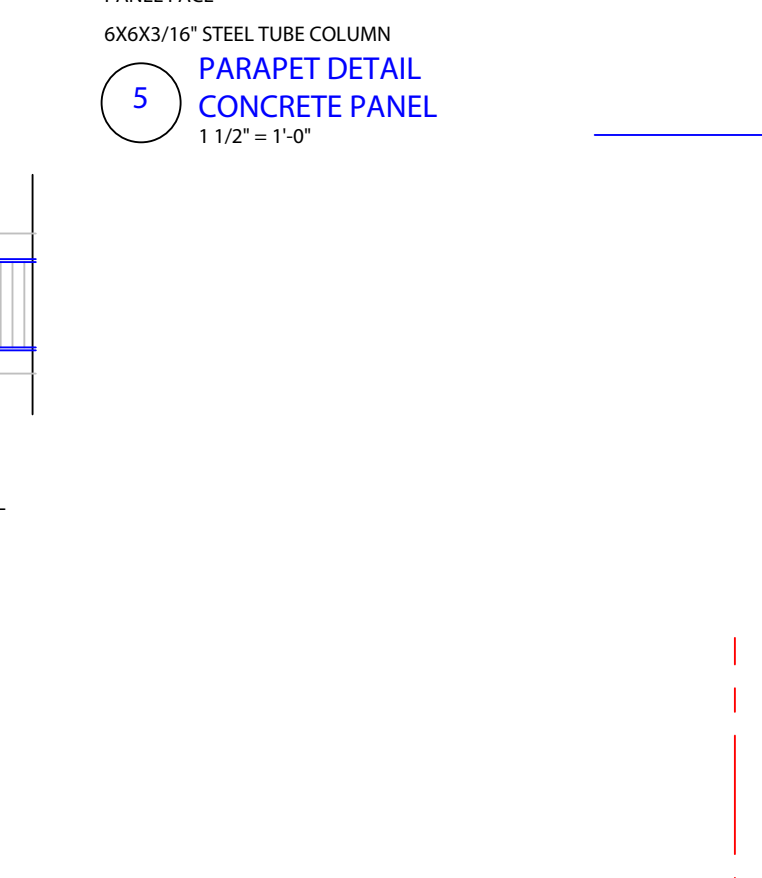
**6 SILL DETAIL CONCRETE PANEL**  
1 1/2" = 1'-0"

DOUBLE BEAD NPC SOLAR SEAL 900 ELASTOMERIC SEALANT W/ CONTINUOUS SEALANT BEAD ON EXPOSED EDGE  
3.5" @ 24" OC POLYURETHANE FOAM INSULATION  
26 GA FORMED SHEET STEEL PANEL FACE  
#12X3/4" HW-1/4" STITCH WITH SEALANT BEAD COVERING HEAD  
FAB-LOK MOLLY ON RIBS 3" BETWEEN CENTER OF PANEL  
2-#12X24X1 1/4" STRUCTURAL SCREWS ON RIB JOINTS @ 6" OC  
JOINT CENTERED ON ROOF JOIST



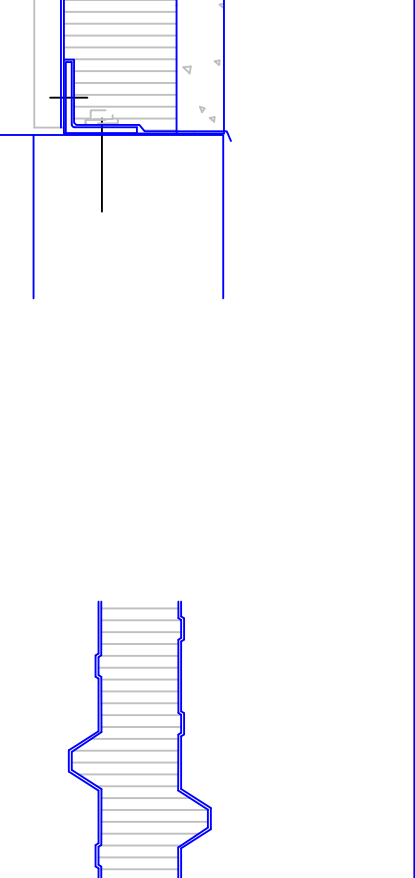
**9 ROOF PANEL SPlice**  
1 1/2" = 1'-0"

6X6X3/16" STEEL TUBE COLUMN  
POLYURETHANE FOAM INSULATION  
26 GA FORMED SHEET STEEL PANEL FACE  
CONTINUOUS BEAD SILICONE SEALANT  
#12X3/4" HW-1/4" STITCH @ 24" OC  
SCREWS  
26 GA EXTERNAL CORNER TRIM



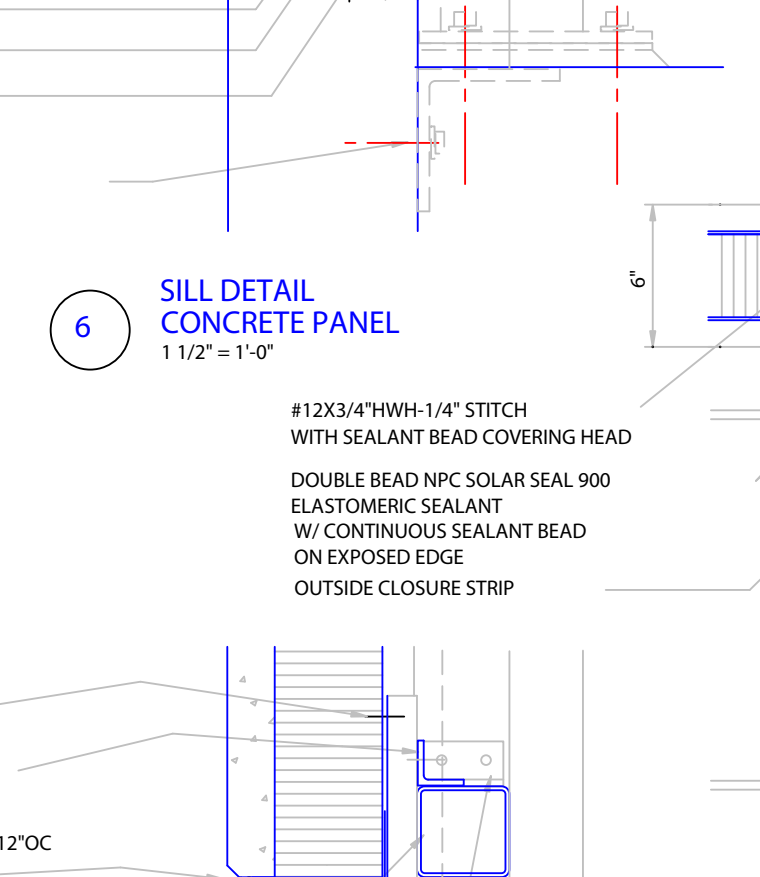
**11 METAL WALL PANEL JOINT**  
1 1/2" = 1'-0"

6X6X3/16" STEEL TUBE COLUMN  
POLYURETHANE FOAM INSULATION  
26 GA FORMED SHEET STEEL PANEL FACE  
CONTINUOUS BEAD SILICONE SEALANT  
#12X3/4" HW-1/4" STITCH @ 24" OC  
SCREWS  
26 GA EXTERNAL CORNER TRIM



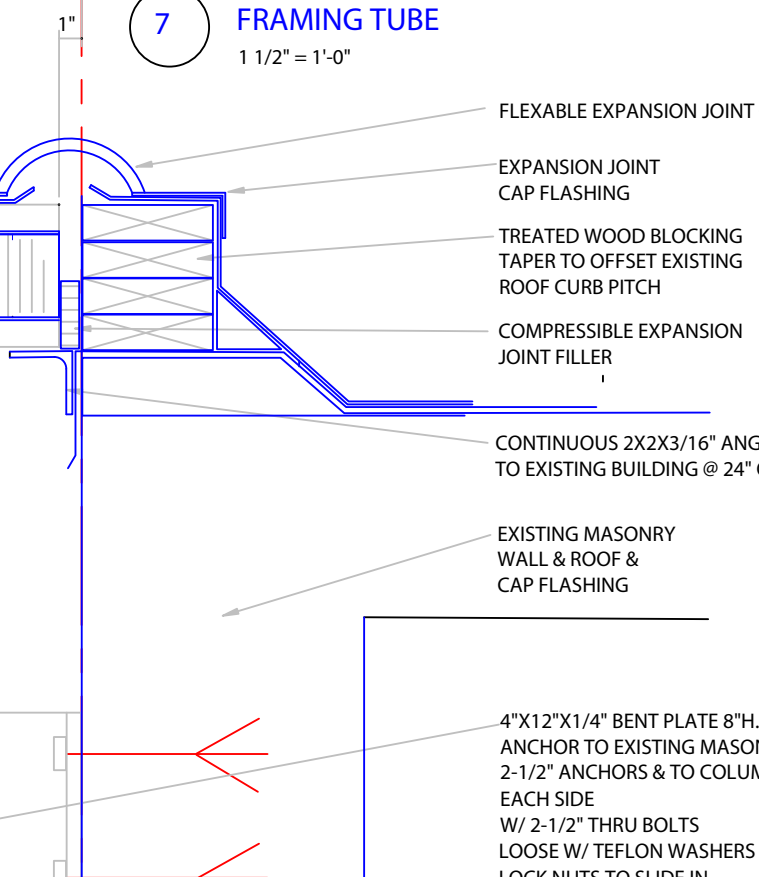
**12 METAL WALL PANEL CORNER JOINT**  
1 1/2" = 1'-0"

#12X3/4" HW-1/4" STITCH SCREWS @ 3" OC  
2X2X3/16" ATTACHMENT ANGLE WELD TO BEAM FLANGE  
2" STITCH WELD @ 12" OC  
FAB-LOK MOLLY @ EACH RIB  
NPI SEALANT & BACKER ROD  
1/2" BEVEL @ CONC. JOINTS  
PROVIDE 1" WEEP @ BASE OF EACH VERTICAL PANEL JOINT  
ELASTOMERIC FLASHING  
SIKA SEALANT TAPE  
4X4X3/16" STEEL TUB FRAME  
2X2X3/16" CLIP ANGLES



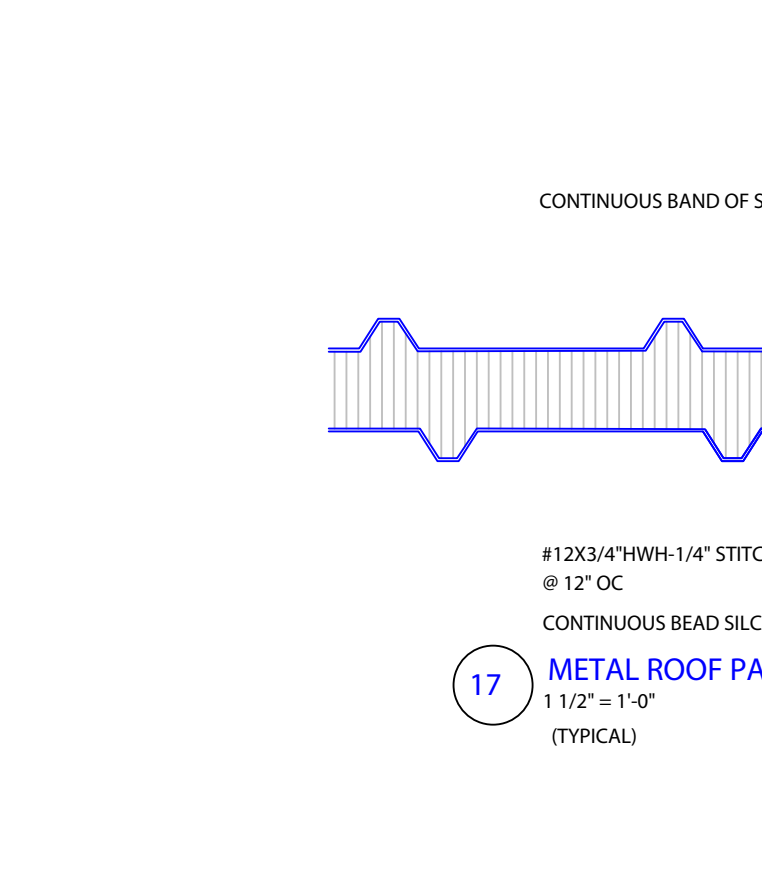
**19 FRAMING TUBE**  
1 1/2" = 1'-0"

4" SQ. FRAMING TUBE BASE: 6X6X1/2" GALV. CLIP ANGLE 8" L W/ 2 - 5/8" X 4 1/2" ANKR-TITE BOLTS  
FLEXIBLE EXPANSION JOINT COVER  
EXPANSION JOINT CAP FLASHING  
TREATED WOOD BLOCKING TAPER TO OFFSET EXISTING ROOF CURB PITCH  
COMPRESSIBLE EXPANSION JOINT FILLER  
CONTINUOUS 2X2X3/16" ANGLE ANCHOR TO EXISTING BUILDING @ 24" OC  
EXISTING MASONRY WALL & ROOF & CAP FLASHING



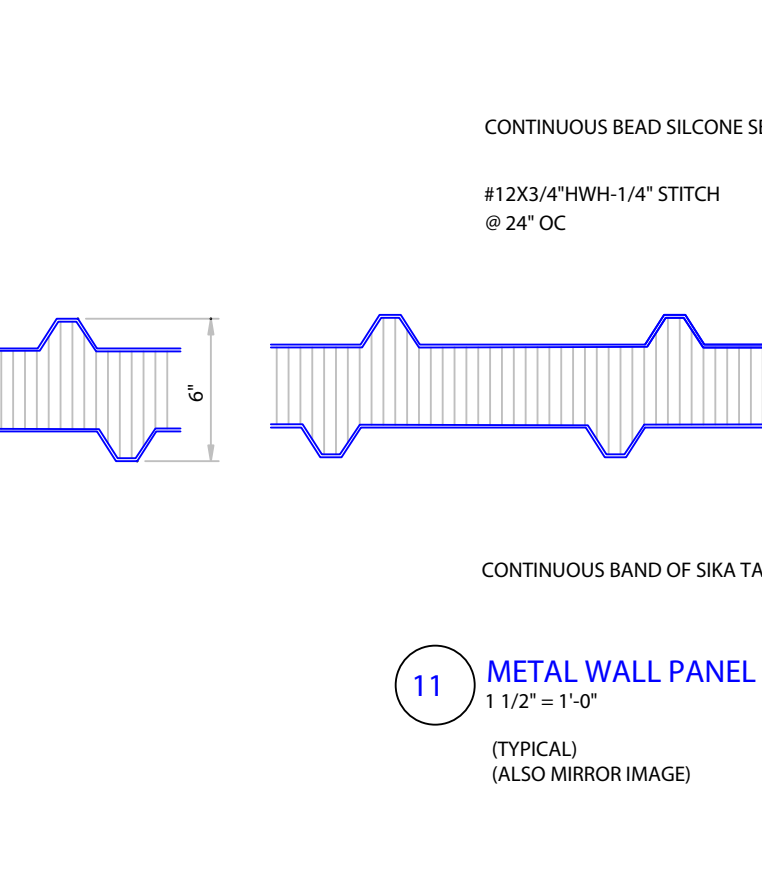
**10 ROOF EXPANSION JOINT DETAIL**  
1 1/2" = 1'-0"

4" SQ. FRAMING TUBE BASE: 6X6X1/2" GALV. CLIP ANGLE 8" L W/ 2 - 5/8" X 4 1/2" ANKR-TITE BOLTS  
4" X 12" X 1/4" BENT PLATE 8" H ANCHOR TO EXISTING MASONRY 2-1/2" ANCHORS & TO COLUMN EACH SIDE W/ 2-1/2" THRU BOLTS LOOSE W/ TEFLOON WASHERS & LOCK NUTS TO SLIDE IN 2" SLOTTED HOLES (BY STRUCTURAL STEEL ERECTORS)



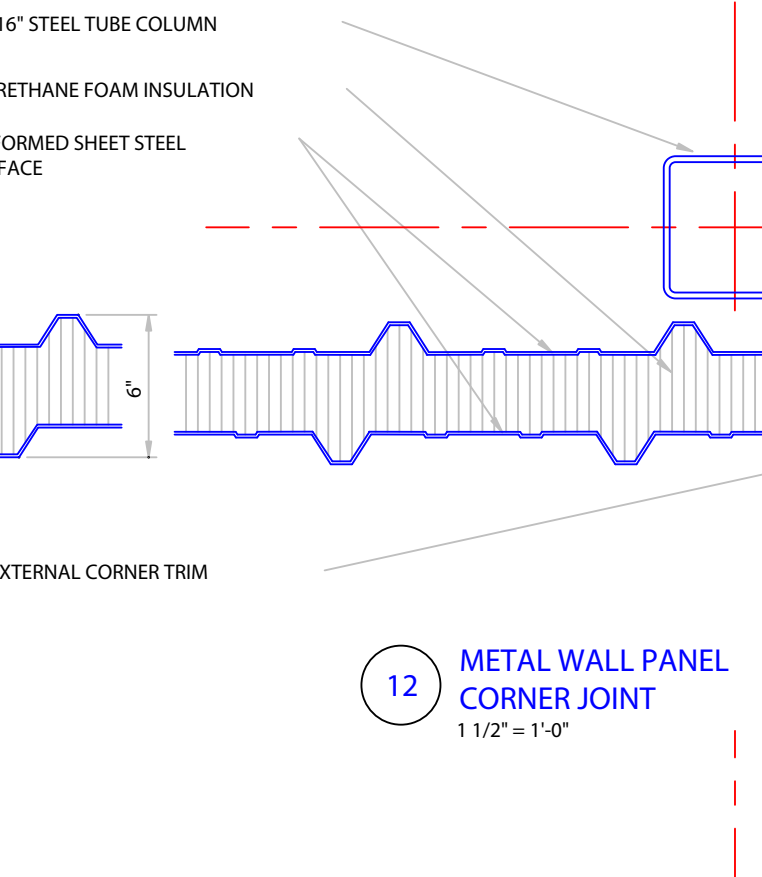
**14 CONCRETE-TO-STEEL PANEL JOINT**  
1 1/2" = 1'-0"

#12X3/4" HW-1/4" STITCH @ 24" OC  
CONTINUOUS BEAD SILICONE SEALANT  
26 GA CONTINUOUS CLOSURE ANGLE FABRICATED INTO PANEL  
1/2" 45 DEG. BEVEL  
NPI SEALANT & BACKER ROD  
AIR ENTRAINED 2" THICK LIGHT WEIGHT CONCRETE PANEL FACE W/ 6X6/10X10 WWF



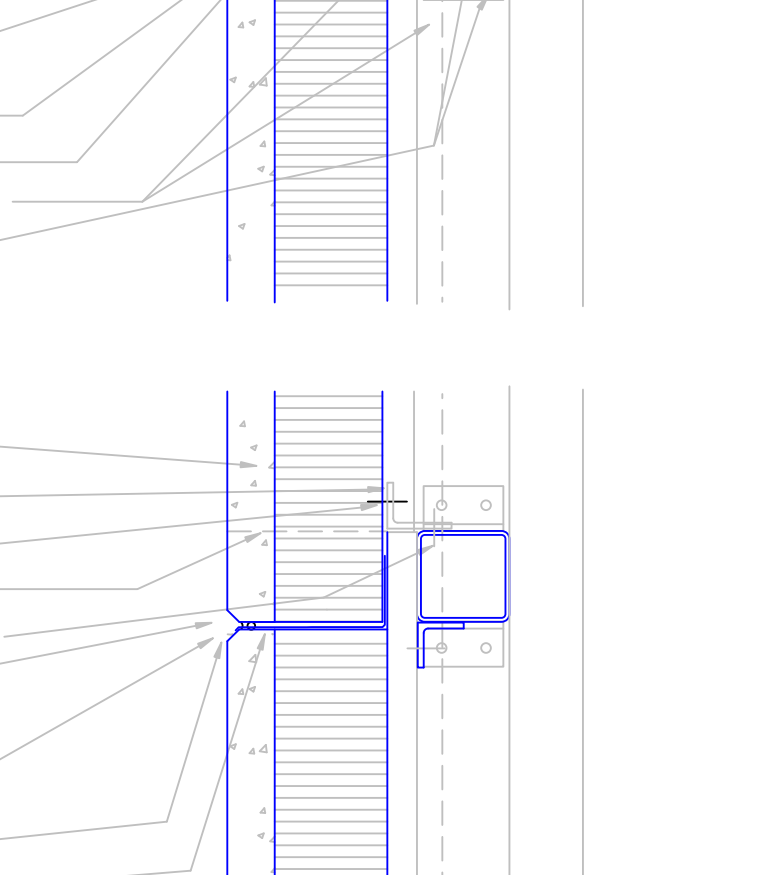
**15 CONCRETE WALL PANEL JOINT**  
1 1/2" = 1'-0"

#12X3/4" HW-1/4" STITCH @ 24" OC  
SCREWS  
NPI SEALANT & BACKER ROD 1/2" 45 DEG. BEVEL  
AIR ENTRAINED 2" THICK LIGHT WEIGHT CONCRETE PANEL FACE W/ 6X6/10X10 WWF



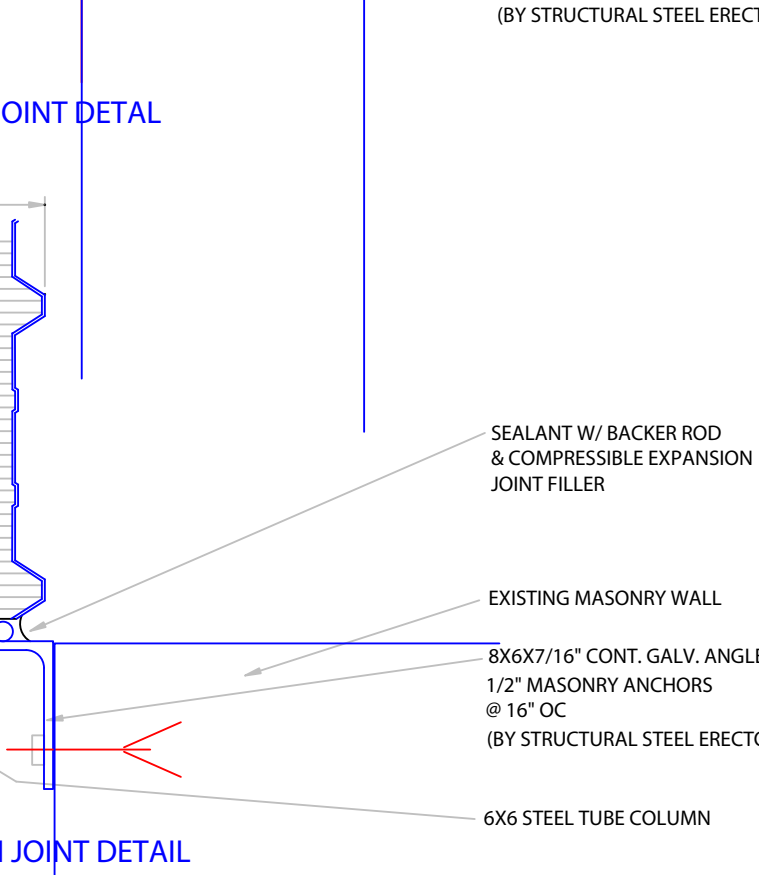
**16 CONCRETE WALL PANEL CORNER JOINT**  
1 1/2" = 1'-0"

COMPOSITE COLUMN PANEL  
2X3X2" L CLIP ANGLE  
FAB-LOK MOLLY TOP OF COMPOSITE SILL PANEL BEYOND  
#12X24X1 1/4" STRUCTURAL  
NPI SEALANT & BACKER ROD  
PROVIDE 1" WEEP @ BASE OF EACH VERTICAL PANEL JOINT  
ELASTOMERIC FLASHING  
SIKA SEALANT TAPE  
COMPOSITE SILL PANEL



**13 VERTICAL EXPANSION JOINT DETAIL**  
1 1/2" = 1'-0"

SEALANT W/ BACKER ROD & COMPRESSIBLE EXPANSION JOINT FILLER  
EXISTING MASONRY WALL  
8X6X7/16" CONT. GALV. ANGLE 1/2" MASONRY ANCHORS @ 16" OC (BY STRUCTURAL STEEL ERECTORS)  
6X6 STEEL TUBE COLUMN



**16 CONCRETE WALL PANEL CORNER JOINT**  
1 1/2" = 1'-0"